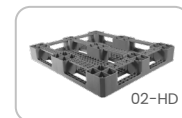
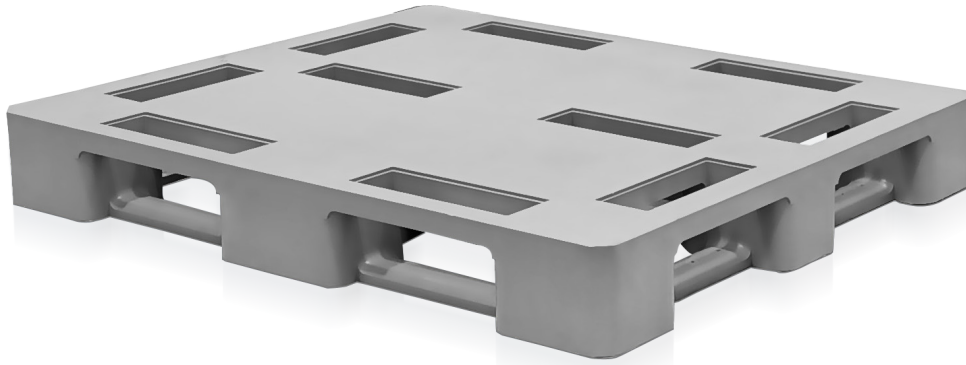





GENERAL PURPOSE PALLET [02]

02-HD



Semi closed surface pallet works perfect for products having special size either too small or big. The pallet is manufactured from durable and impact resistant PP. This is ideally suited for semi-hygienic applications as well as with high circulation rates in open and closed loops. Mostly used in food and beverage industries and it is also popular solution for the transport of intermediate products in areas such as construction.

TECHNICAL DATA

CODE	02-HD
Pallet Name	Heavy Duty
Dimensions LxWxH (mm)	1200 x 1000 x 150
Static Loading (kg)	5000
Dynamic Loading (kg)	1600
Racking Loading (kg)	900
Structure	
Runners	3 longitudinal, 2 transverse
Standard Color	
Container Load [40' HC]	350 PCs
Standard Truck Load	520 PCs
Rackable	

REQUEST OPTIONS

Customized Color

Client LOGO Printed

Safety Lips

ADVANTAGES

- ✓ Anti-impact perimeter
- ✓ Large window operations for easy handling
- ✓ Plastic pallets have fewer or no repairs.
- ✓ Plastic pallets improve efficiencies due to standard dimensions and lack of broken board.
- ✓ Plastic pallets offer better product protection no nails or broken boards to damage payload.
- ✓ Plastic pallets offer better stability no damaged or missing boards causing spills or falling stacks.
- ✓ Plastic pallets improve safety and lower workers compensation claims.
- ✓ Plastic pallets allow for greater utilization of warehouse space stability and higher stacking.

Recommendations for use

- ✓ Do not stack more than 30 pallets, which is equivalent to a height of 4.65 m when empty.
- ✓ Once stacked in height check that they are properly fitted.

- The values indicated are approximate and are based on practical experience and ISO 8611-, evenly distributed load over pallet surface, at ambient temperature (23° C) for a specific time. Different load conditions produce different values that have to be checked at the customer's request. Any deterioration or breakage in the pallet may vary these results.
- Due to the characteristics of plastic materials and manufacturing process, the dimensions and the weight of the pallets may present certain tolerances.
- The specification can be affected in case of alteration of the product with parts and / or materials different from those approved by the RePal quality department.
- RePal reserves the right to modify any information herein indicated without prior notice.
- Any warranty, specification or liability on the part of RePal will be terminated in case of modification of the product with spare parts not supplied by RePal.

