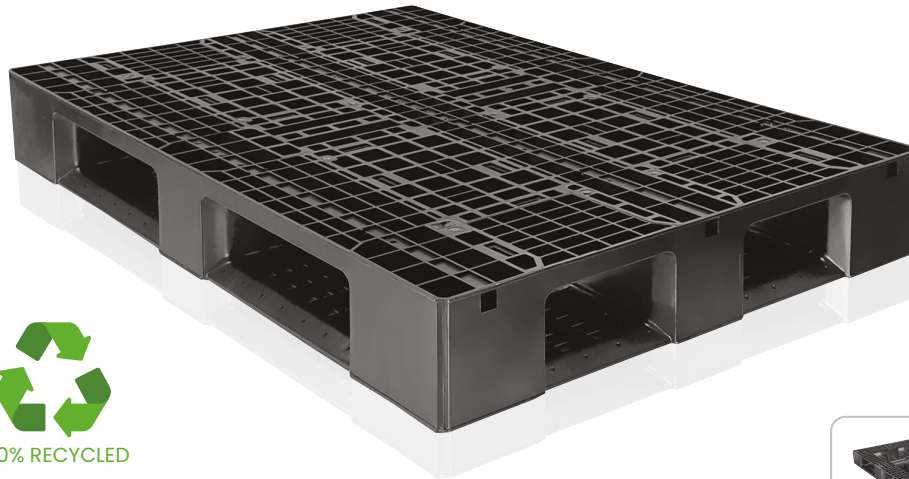


ECO-INDUSTRIAL PALLET [03-HD ECO]

03-HD ECO




100% RECYCLED



These pallets can be reused several times, reducing waste and conserving natural resources. In addition, using recycled pallets can save money compared to buying new ones, as they are often sold at a lower price. By choosing recycled pallets, you are making a positive contribution to the environment while also supporting sustainable practices in industry and commerce.

TECHNICAL DATA

CODE	03-HD ECO
Dimensions LxWxH (mm)	1200 x 800 x 150
Static Loading (kg)	3000
Dynamic Loading (kg)	1000
Structure	
Runners	2 longitudinal, 3 transverse
Standard Color	●
Container Load [40' HC]	408 PCs
Standard Truck Load	660 PCs
Rackable	✓

REQUEST OPTIONS

Steel enforcement

Customized Color

Client Logo Printed

Client LOGO Engraved

Anti-Slip Rubber

Safety Lips

Caps

ADVANTAGES

- ✓ Anti-impact perimeter
- ✓ Large window operations for easy handling
- ✓ Plastic pallets have fewer or no repairs.
- ✓ Plastic pallets improve efficiencies due to standard dimensions and lack of broken board.
- ✓ Plastic pallets offer better product protection no nails or broken boards to damage payload.
- ✓ Plastic pallets offer better stability no damaged or missing boards causing spills or falling stacks.
- ✓ Plastic pallets improve safety and lower workers compensation claims.
- ✓ Plastic pallets allow for greater utilization of warehouse space stability and higher stacking.

Recommendations for use

- ✓ Do not stack more than 30 pallets, which is equivalent to a height of 4.65 m when empty.
- ✓ Once stacked in height check that they are properly fitted.

- The values indicated are approximate and are based on practical experience and ISO 8611-, evenly distributed load over pallet surface, at ambient temperature (23° C) for a specific time. Different load conditions produce different values that have to be checked at the customer's request. Any deterioration or breakage in the pallet may vary these results.
- Due to the characteristics of plastic materials and manufacturing process, the dimensions and the weight of the pallets may present certain tolerances.
- The specification can be affected in case of alteration of the product with parts and / or materials different from those approved by the RePall quality department.
- RePall reserves the right to modify any information herein indicated without prior notice.
- Any warranty, specification or liability on the part of RePall will be terminated in case of modification of the product with spare parts not supplied by RePall.

