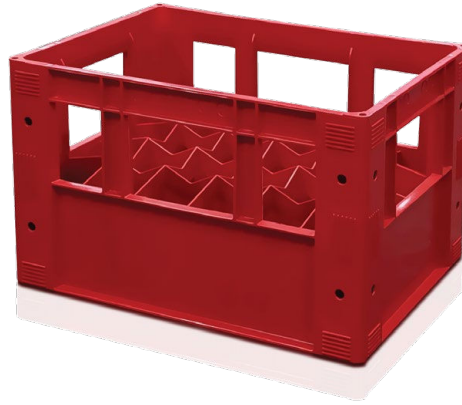


BEVERAGE CRATE

CR-05/24



These crates are made of plastic that are used to store and transport beverages such as juices, soft drinks. It has multiple slots to securely and neatly place the bottles inside. Beverage crates are widely used in the hospitality, transportation, and retail industries. They help protect the beverages from breakage and damage during transport and storage, and make it easier to maintain the desired condition of the beverages being transported or stored.

TECHNICAL DATA

CODE	CR-05/24
Extrenal Dimensions LxWxH (mm)	405 X 305 X 270
Capacity (Bottles)	24
Bottle Size	Small (< 0.5 Litter)
Standard Color	●
Client LOGO	Customized
Temperature	-20 / +60 C

FEATURES

Strong and Durable which is withstand regular use and handling

Easy to carry, with handles that are comfortable and secured

Designed for easy stacking to maximize space efficiency



Light Weight enough for easy handling and carrying

Resistant to moisture and heat

Easy to clean

Compatible with standard pallet size (1200x1000 mm)

Compatible with Dolly Code: DO-01

REQUEST OPTIONS

Customized Color

Client LOGO Printed

Client LOGO Engraved

- The values indicated are approximate and are based on practical experience and ISO 8611-, evenly distributed load over pallet surface, at ambient temperature (23° C) for a specific time. Different load conditions produce different values that have to be checked at the customer's request. Any deterioration or breakage in the pallet may vary these results.
- Due to the characteristics of plastic materials and manufacturing process, the dimensions and the weight of the pallets may present certain tolerances.
- The specification can be affected in case of alteration of the product with parts and / or materials different from those approved by the RePal quality department.
- RePal reserves the right to modify any information herein indicated without prior notice.
- Any warranty, specification or liability on the part of RePal will be terminated in case of modification of the product with spare parts not supplied by RePal.

